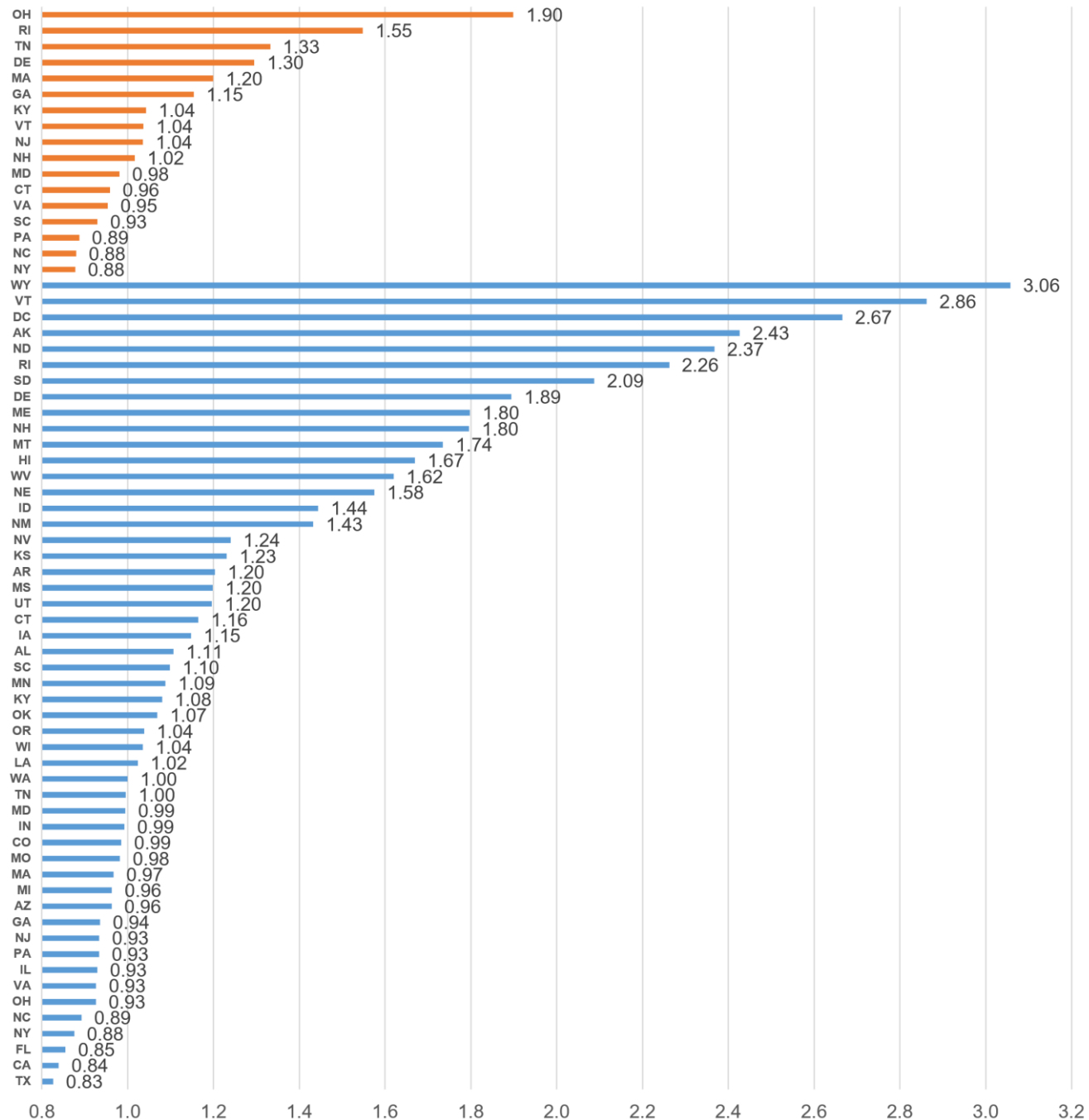


All yours ...

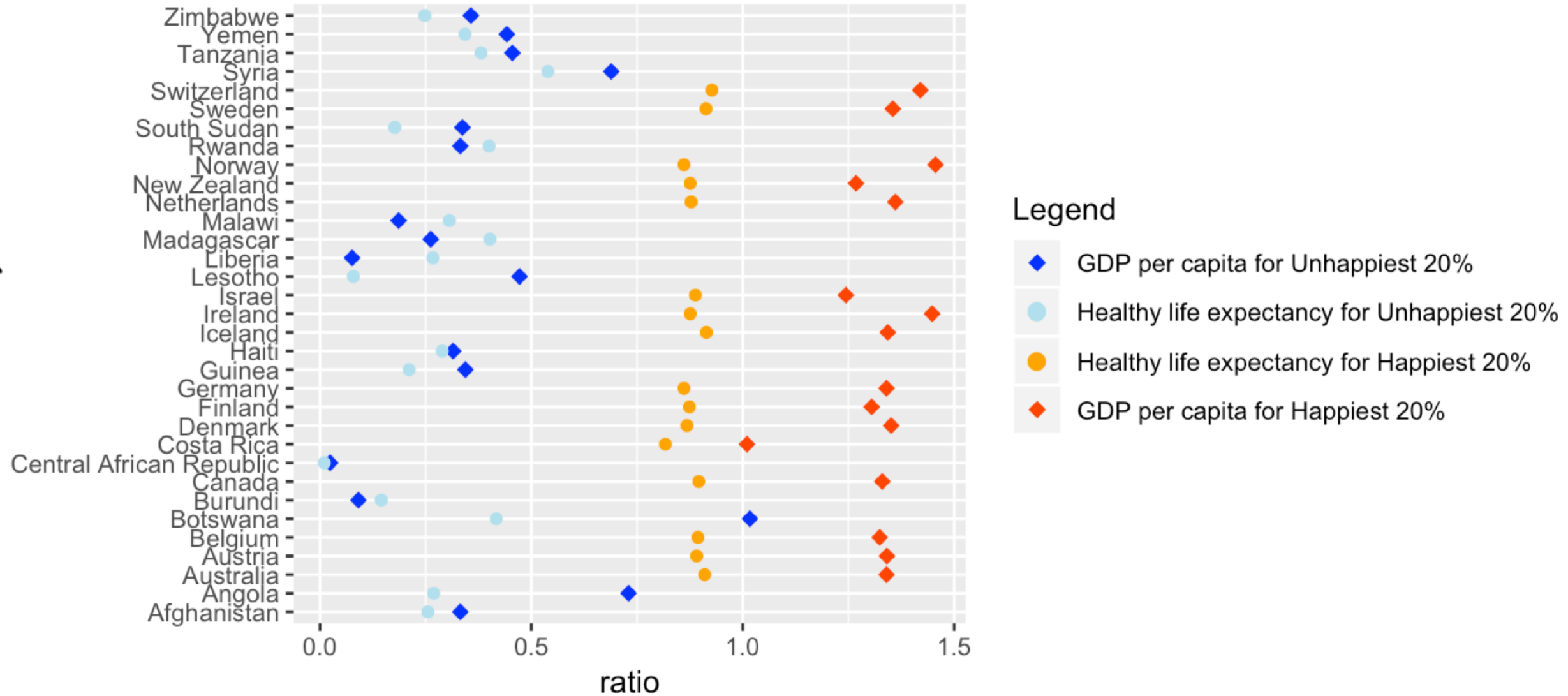
CS4250/CS5250 Assignment 1 – Part 2  
2020

Electoral College Over or Under Representation (1804 vs. 2015)

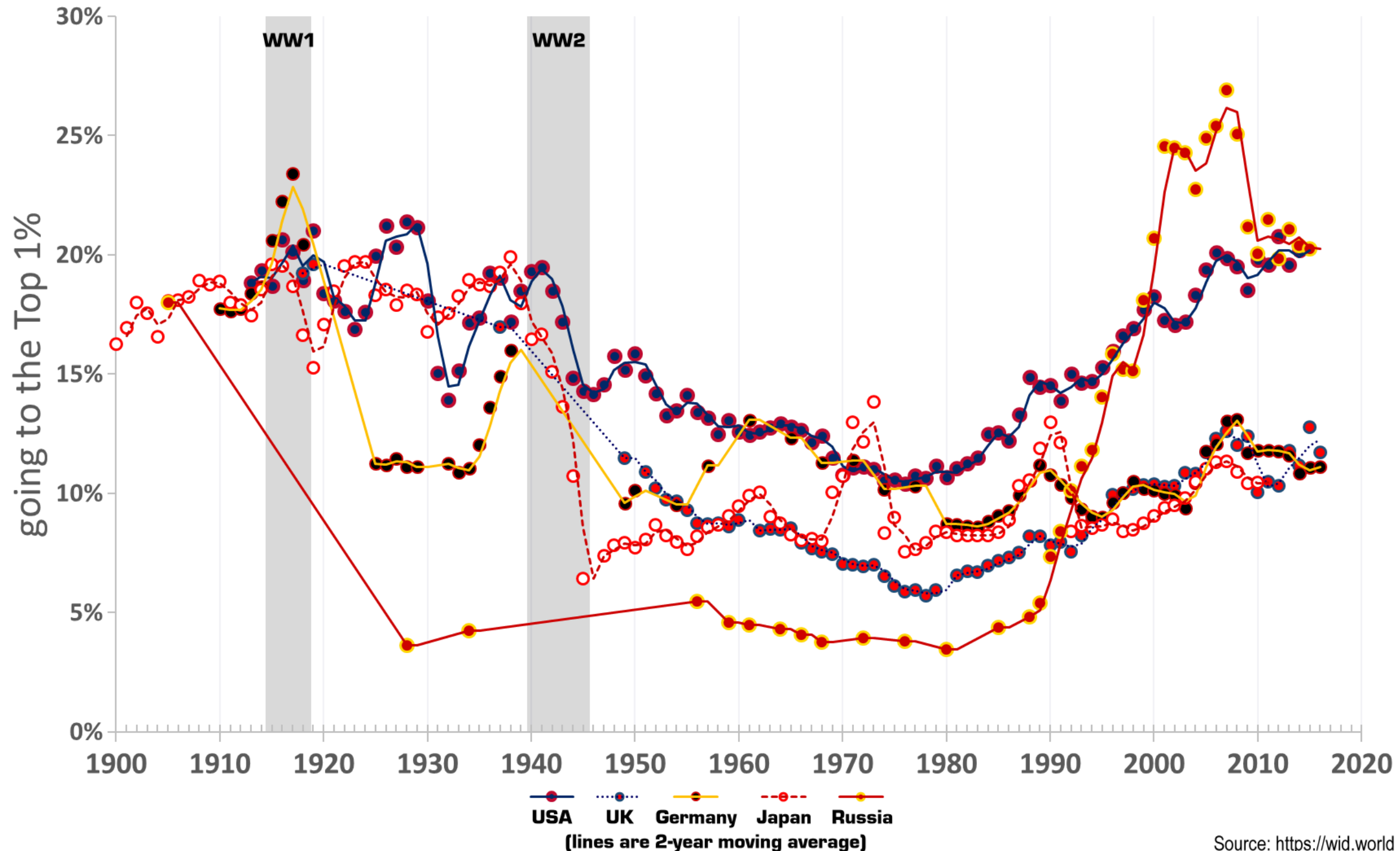


Not a single state was two times over-represented in 1804. Today, six states and DC get at least two times more electoral votes than they would under an equal-population system, while Texas and California each get 15 percent fewer electoral votes.

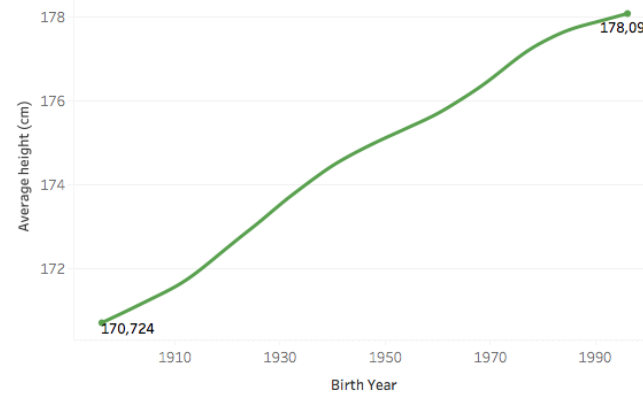
# GDP per capita and healthy life expectancy ratios for the happiest and unhappiest countries



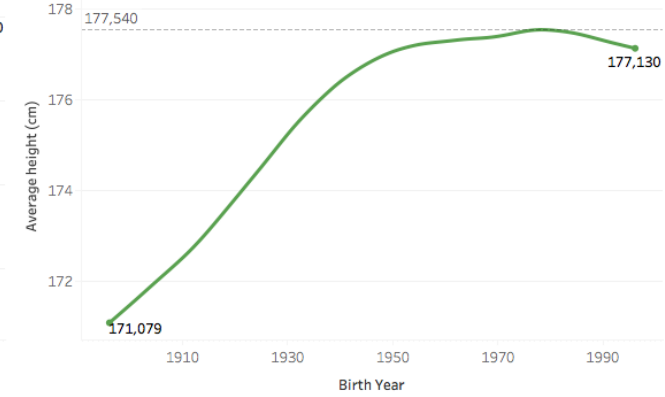
Percentage of (Pretax) National Income going to the Top 1%



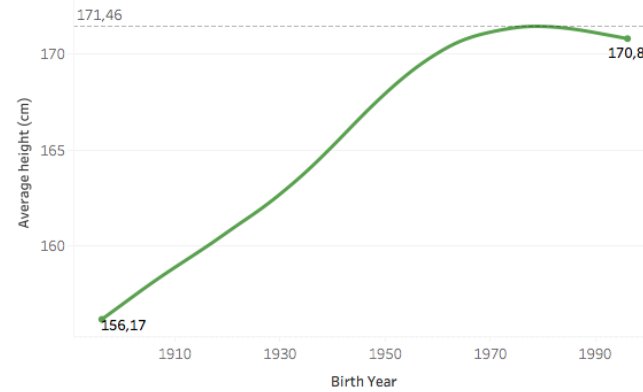
Canada



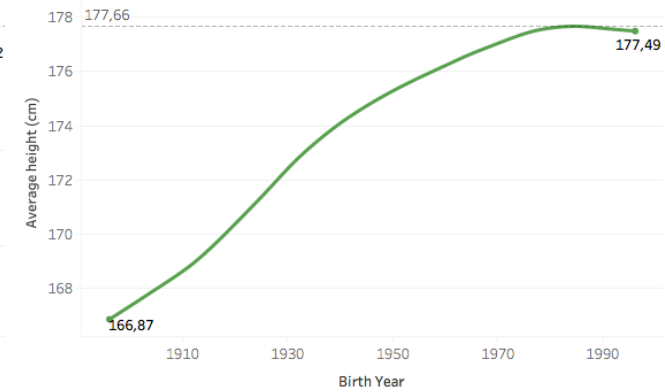
United States



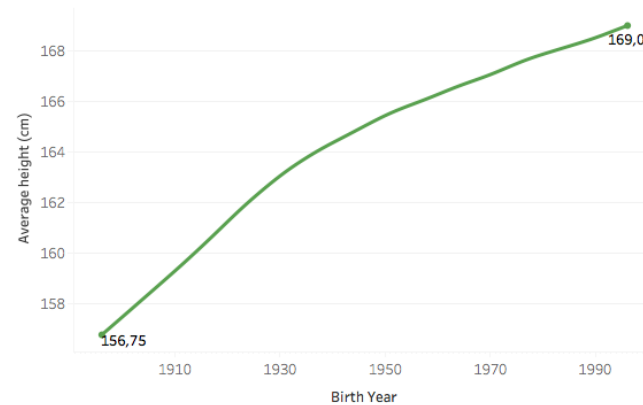
Japan



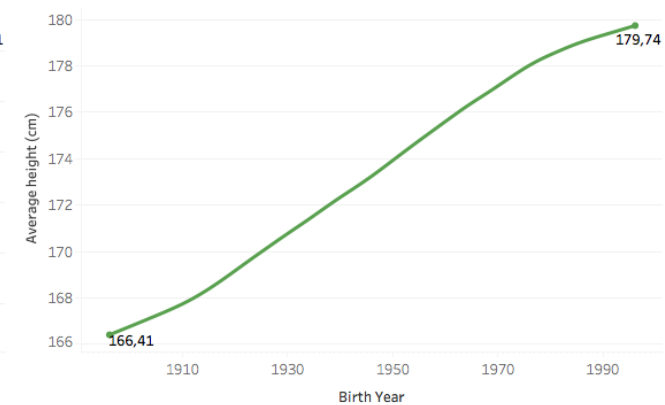
United Kingdom



Mexico



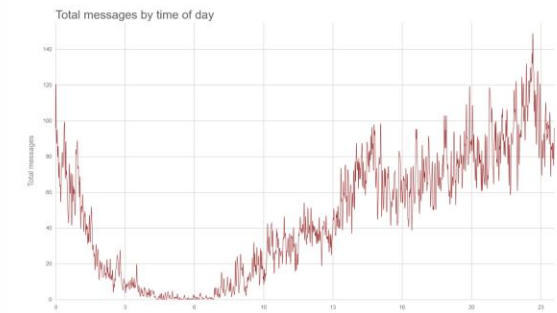
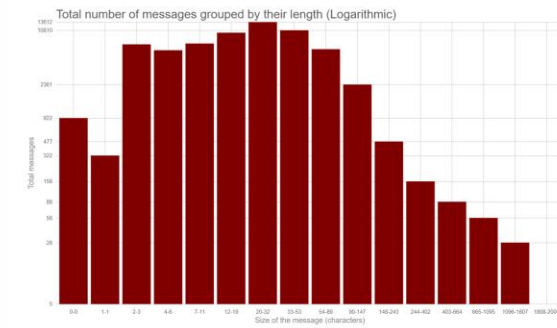
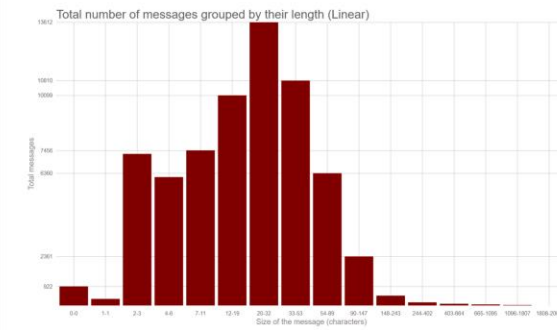
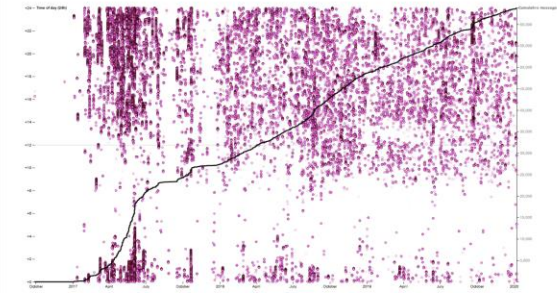
France



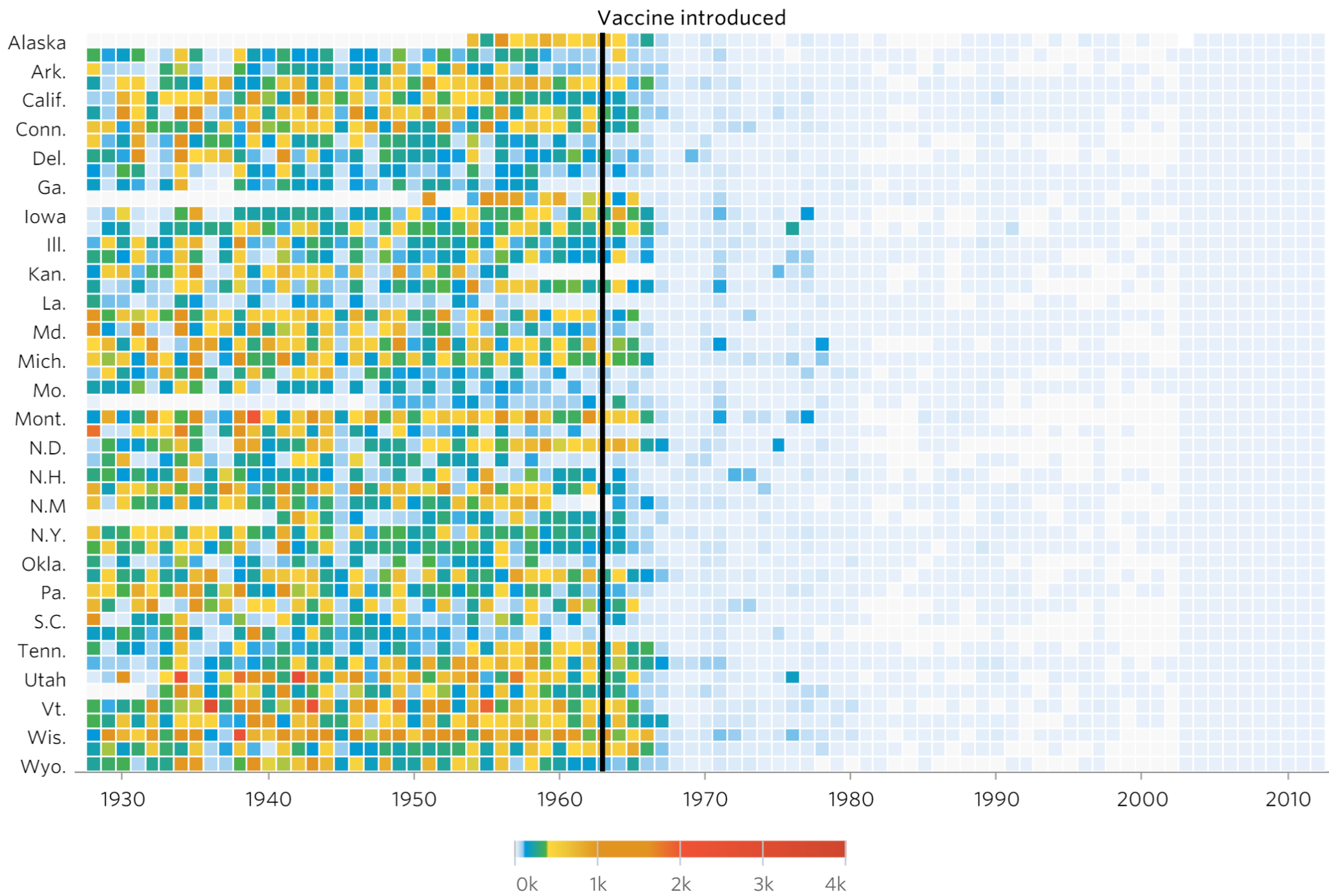
## Analysis of the messages I sent to my girlfriend

From October 2017 to October 2019, Scatterplot + Cumulative line graph

63 813 messages, pinkness represents the length of that specific message



# Measles







# Coronavirus COVID-19 Global Cases by Johns Hopkins CSSE



Total Confirmed

85,181

Confirmed Cases by City,  
Province/State

57 confirmed  
France

48 confirmed  
Germany

45 confirmed  
Kuwait

44 confirmed  
Unassigned Location (From  
Diamond Princess) US

41 confirmed  
Thailand

38 confirmed  
Bahrain

34 confirmed  
Taiwan Taiwan



City, St/Prov



Last Updated at (M/D/YYYY)

2/29/2020, 9:33:18 AM



Cumulative Confirmed Cases

Existing Cases

Lancet Article: [Here](#). Mobile Version: [Here](#). Visualization: [JHU CSSE](#). Automation Support: [Esri Living Atlas team](#) and [JHU APL](#).

Data sources: [WHO](#), [CDC](#), [ECDC](#), [NHC](#) and [DXY](#). Read more in this [blog](#). [Contact US](#).

Total Deaths

2,920

2,727 deaths  
Hubei Mainland China

34 deaths  
Iran

21 deaths  
Italy

21 deaths  
Henan Mainland China

13 deaths  
Heilongjiang Mainland China

13 deaths

Total Recovered

39,447

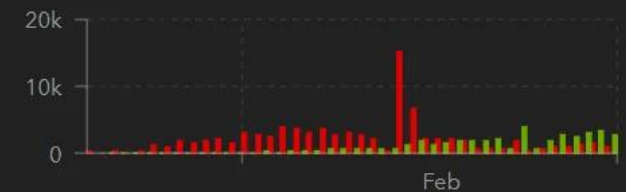
28,895 recovered  
Hubei Mainland China

1,161 recovered  
Henan Mainland China

987 recovered  
Zhejiang Mainland China

972 recovered  
Guangdong Mainland China

842 recovered



New Confirmed



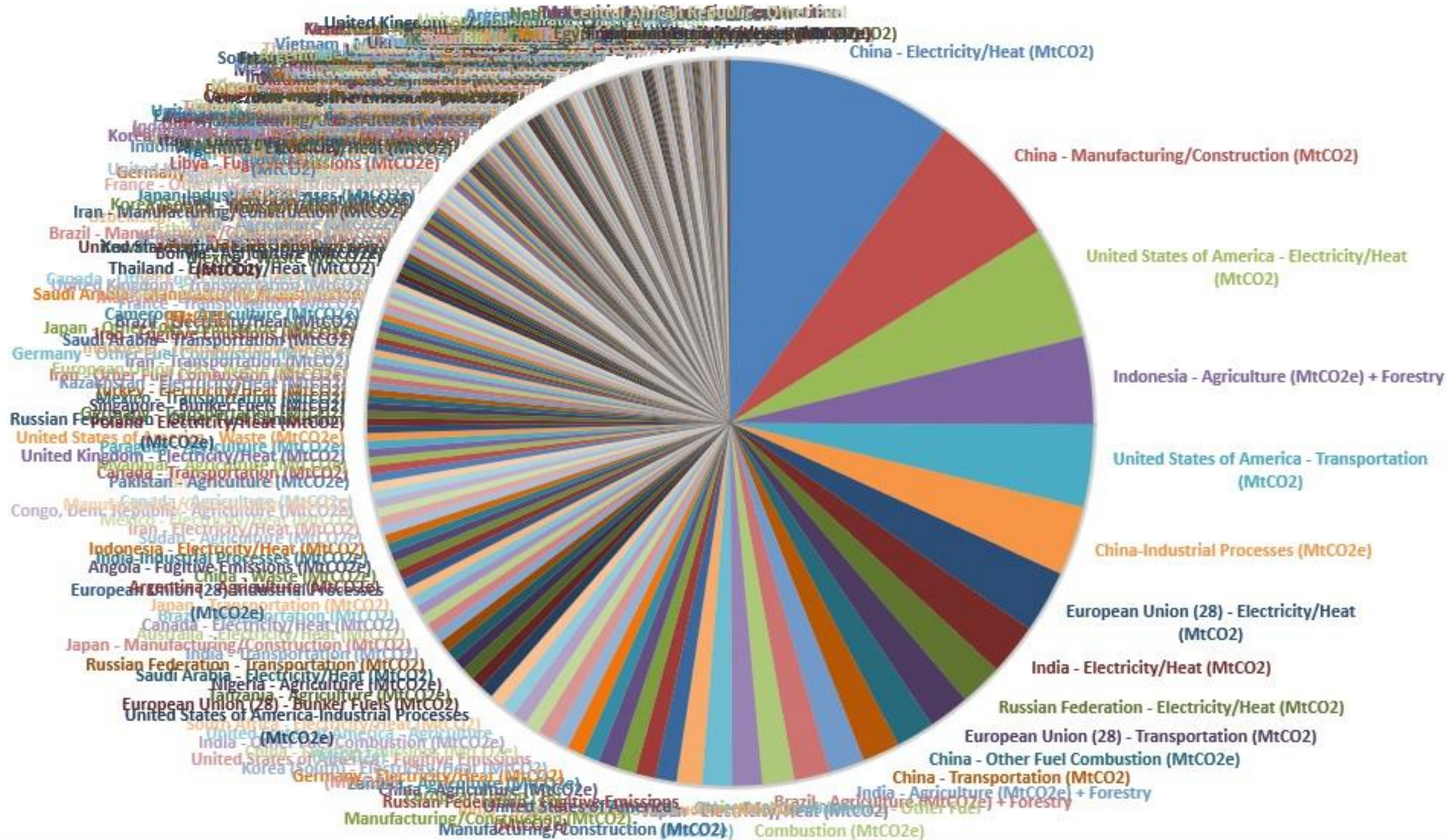
New Recovered

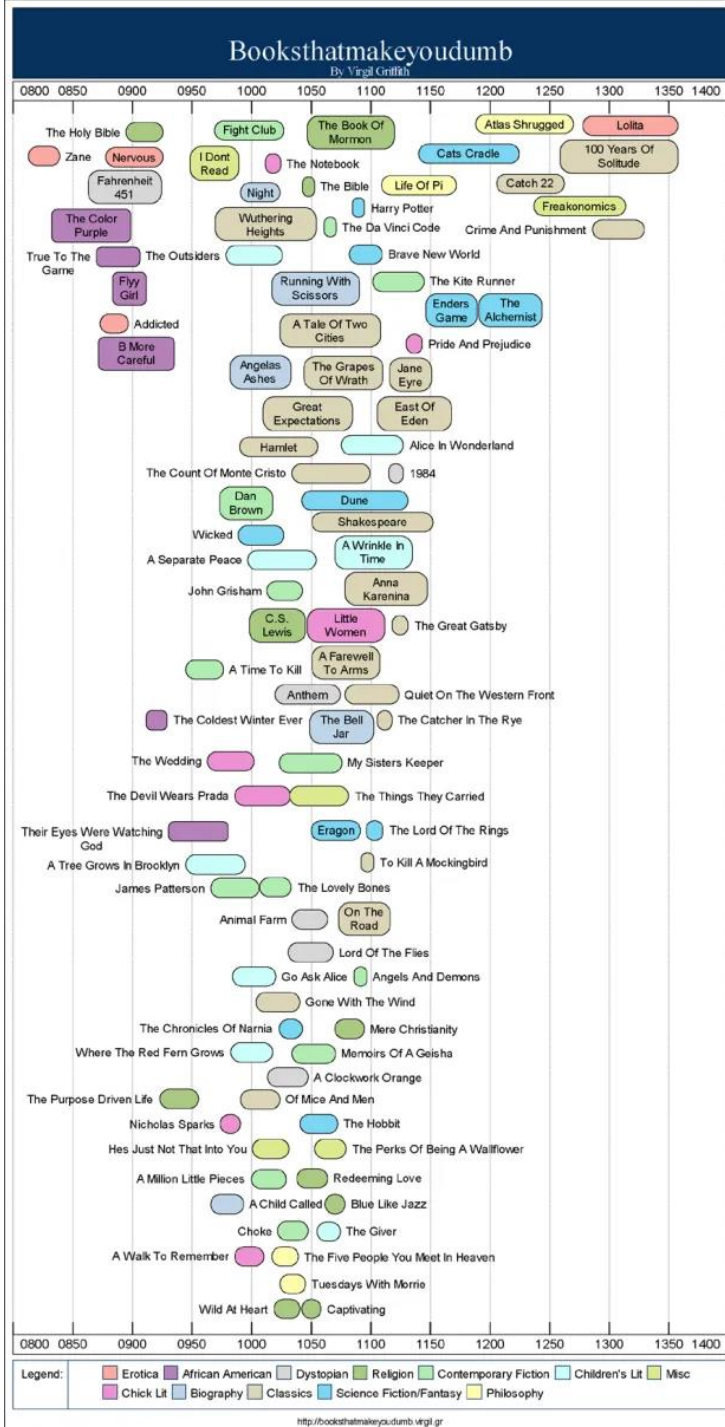
Actual

Logarithmic

Daily Cases



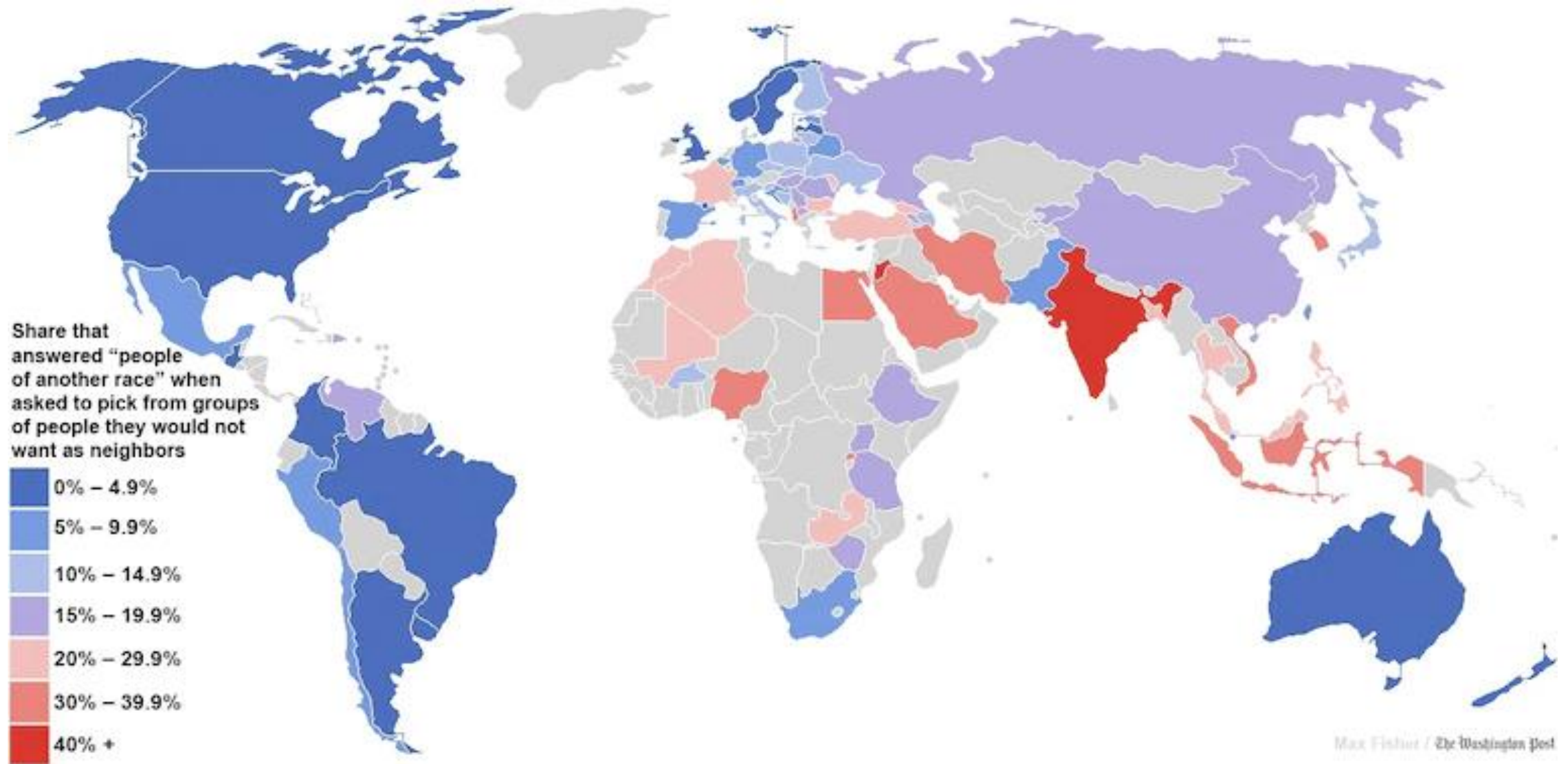




Try to correlate top books on FaceBook by school and the corresponding schools' average SAT scores.

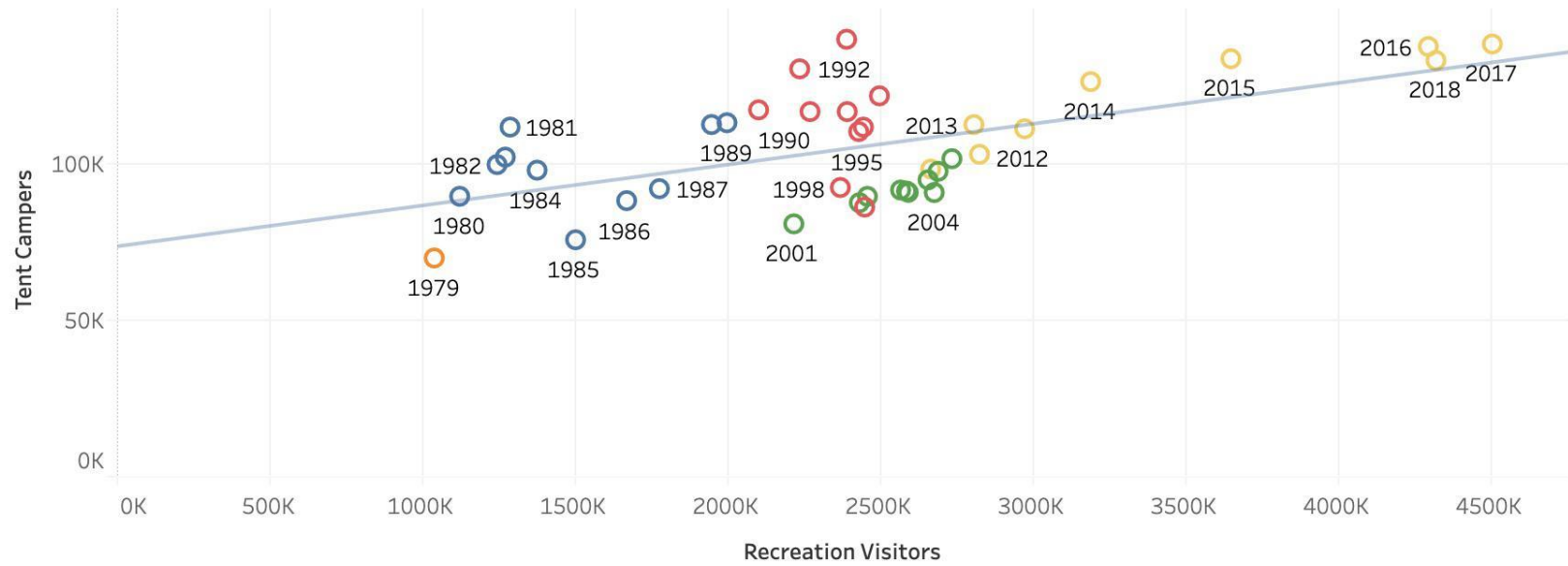


## A fascinating map of the world's most and least racially tolerant countries

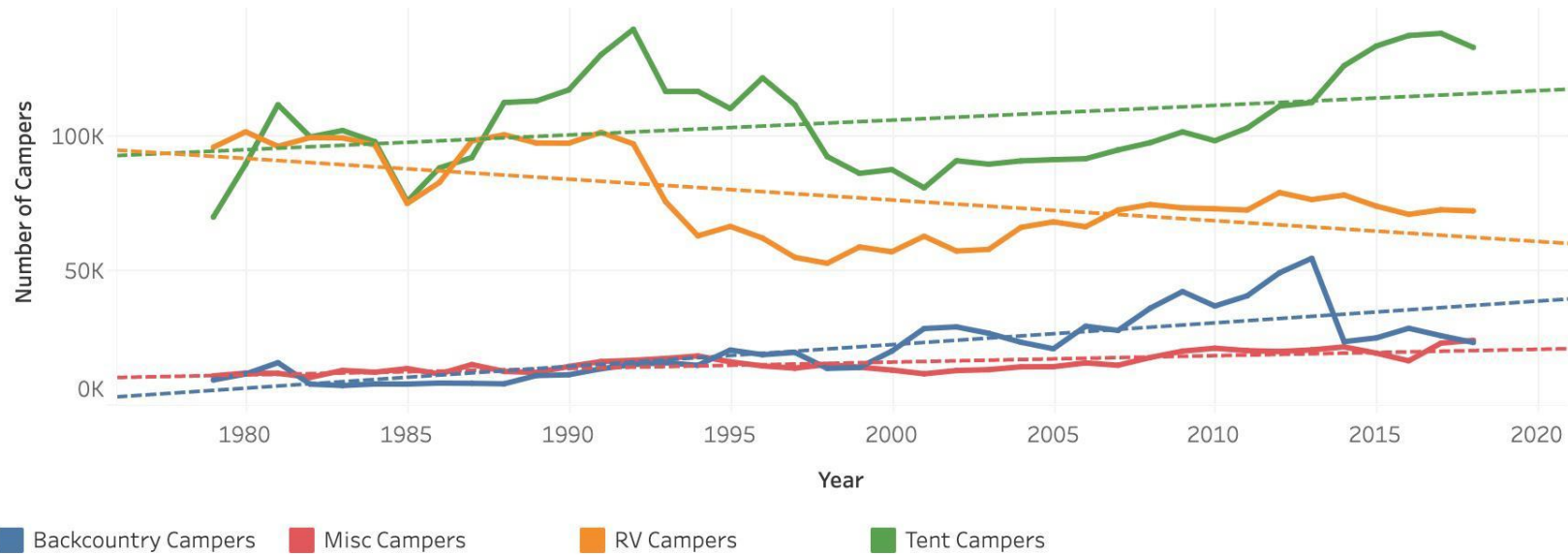


Zion National Park Visitation 1979 - 2018

Visitors and Tent Campers by Year/Decade



Type of Campers by Year



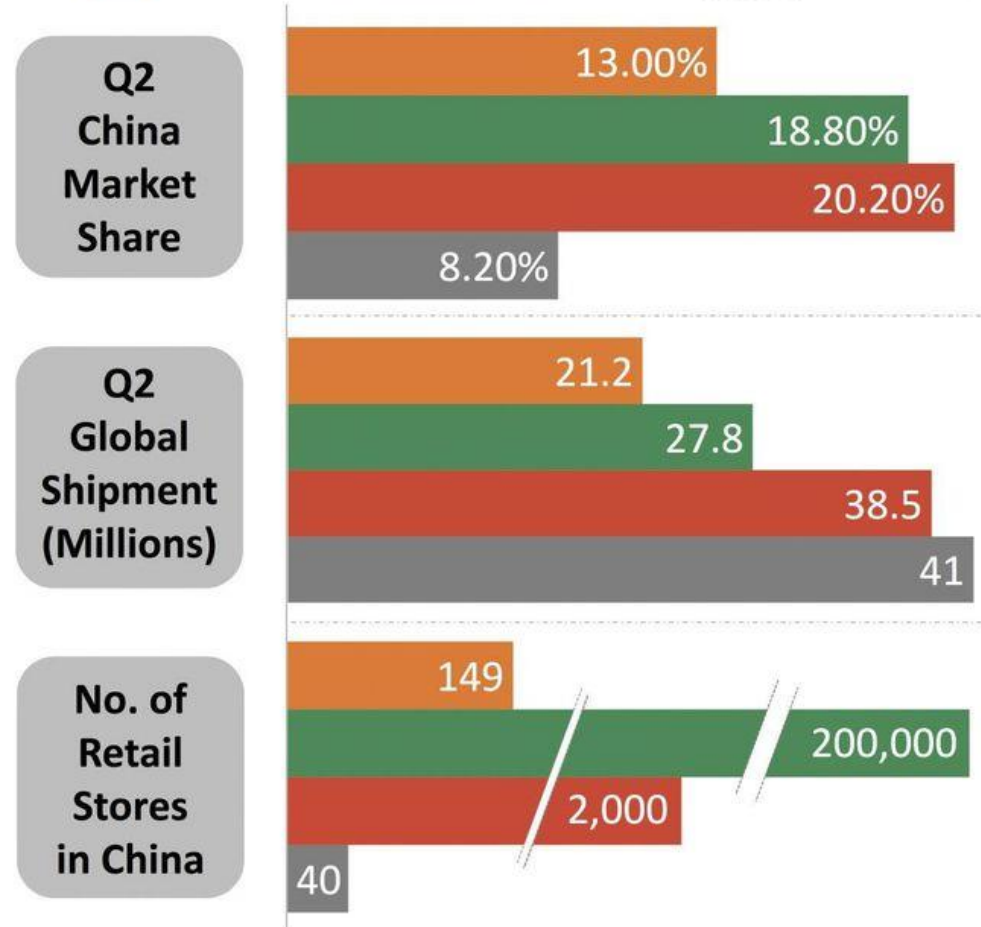
Yearly Visitors

Year	Visitors
1979	1,040,528
1980	1,123,846
1981	1,288,808
1982	1,246,290
1983	1,273,030
1984	1,377,254
1985	1,503,272
1986	1,670,503
1987	1,777,619
1988	1,948,332
1989	1,998,856
1990	2,102,400
1991	2,236,997
1992	2,390,626
1993	2,392,580
1994	2,270,871
1995	2,430,162
1996	2,498,001
1997	2,445,534
1998	2,370,048
1999	2,449,664
2000	2,432,348
2001	2,217,779
2002	2,592,545
2003	2,458,792
2004	2,677,342
2005	2,586,665
2006	2,567,350
2007	2,657,281
2008	2,690,154
2009	2,735,402
2010	2,665,972
2011	2,825,505
2012	2,973,607
2013	2,807,387
2014	3,189,696
2015	3,648,846
2016	4,295,127
2017	4,504,812
2018	4,320,033

Monthly Visitors

Month	Visitors
January	2,206,989
February	2,422,515
March	5,526,570
April	8,729,779
May	10,590,077
June	13,093,599
July	13,619,379
August	13,576,502
September	11,576,582
October	8,578,063
November	4,326,433
December	2,435,376

# How **Xiaomi** Stacks Up Against The World's Biggest Smartphone Makers



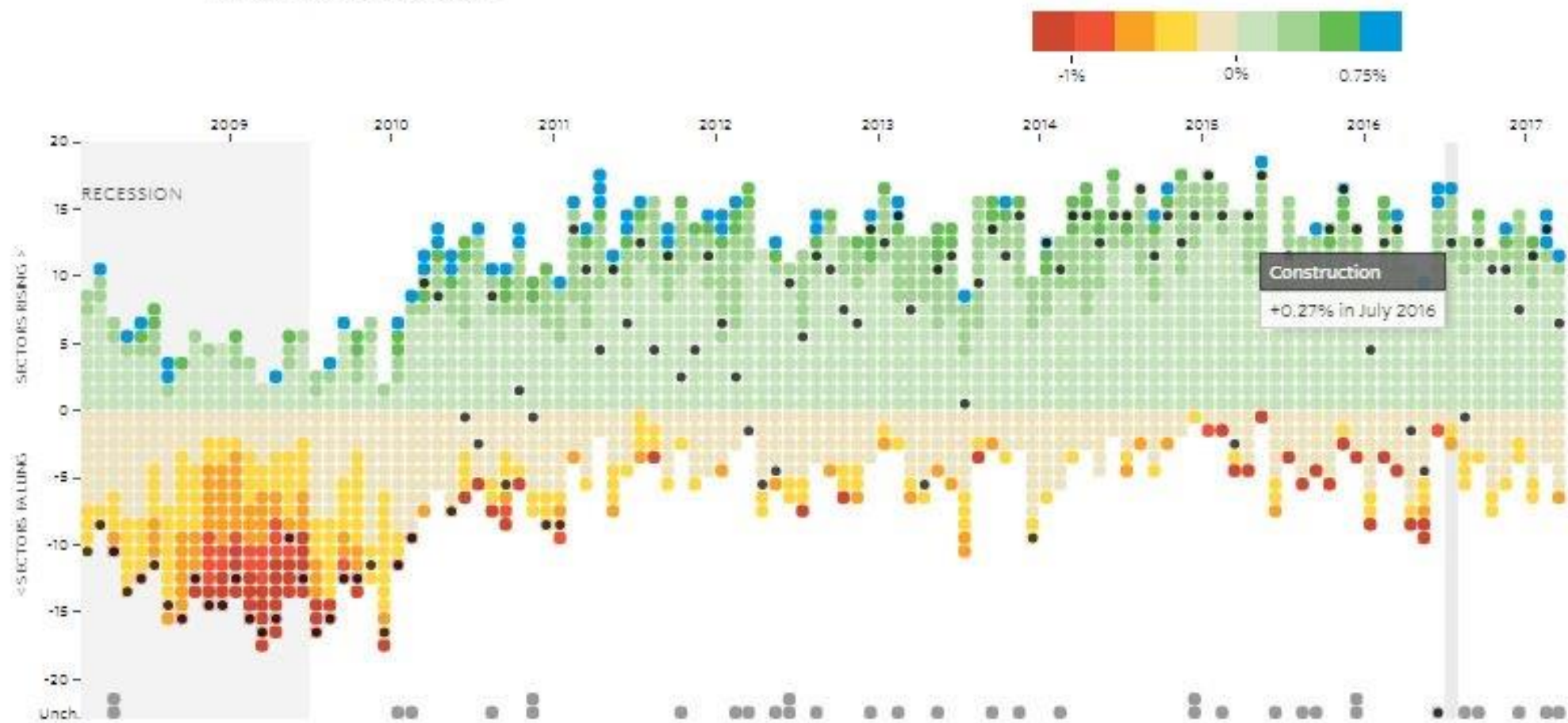
Source: Counterpoint Research, IDC, Xiaomi, Apple, Huawei, Chinese Media Reports

**Forbes**

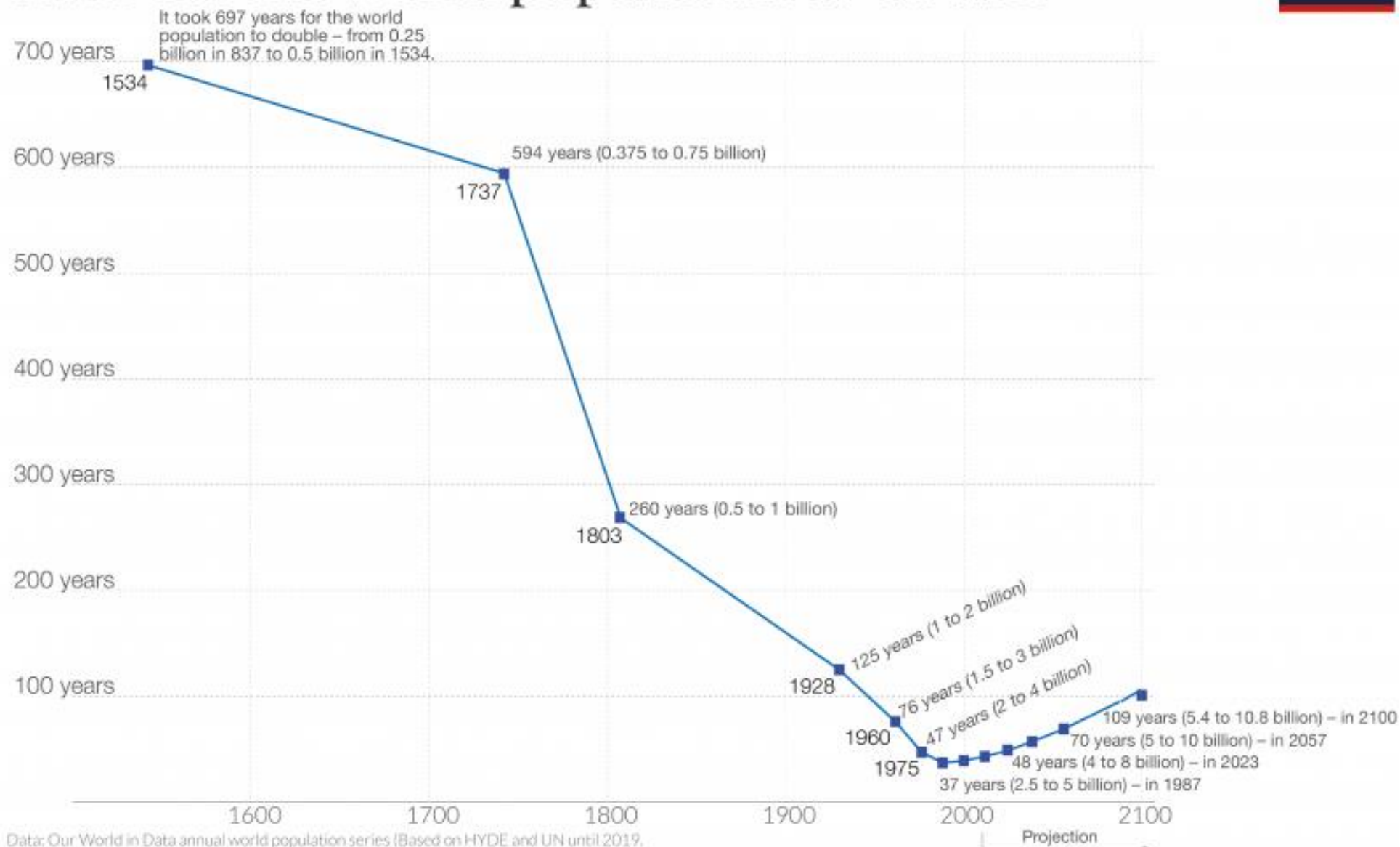


## Winners and Losers: Job Gains and Losses [Jump to National Unemployment](#)

Track the number of sectors gaining or losing jobs each month. Boxes are shaded based on percentage change from the previous month in each sector's payrolls.



# Time for the world population to double



Data: Our World in Data annual world population series (Based on HYDE and UN until 2019, And projections from the UN after 2019 ('Medium Variant' 2019 Revision).

The data visualization is available at [OurWorldinData.org](https://OurWorldinData.org). There you find more data and research on demography and global change

Licensed under CC-BY by the author Max Roser.

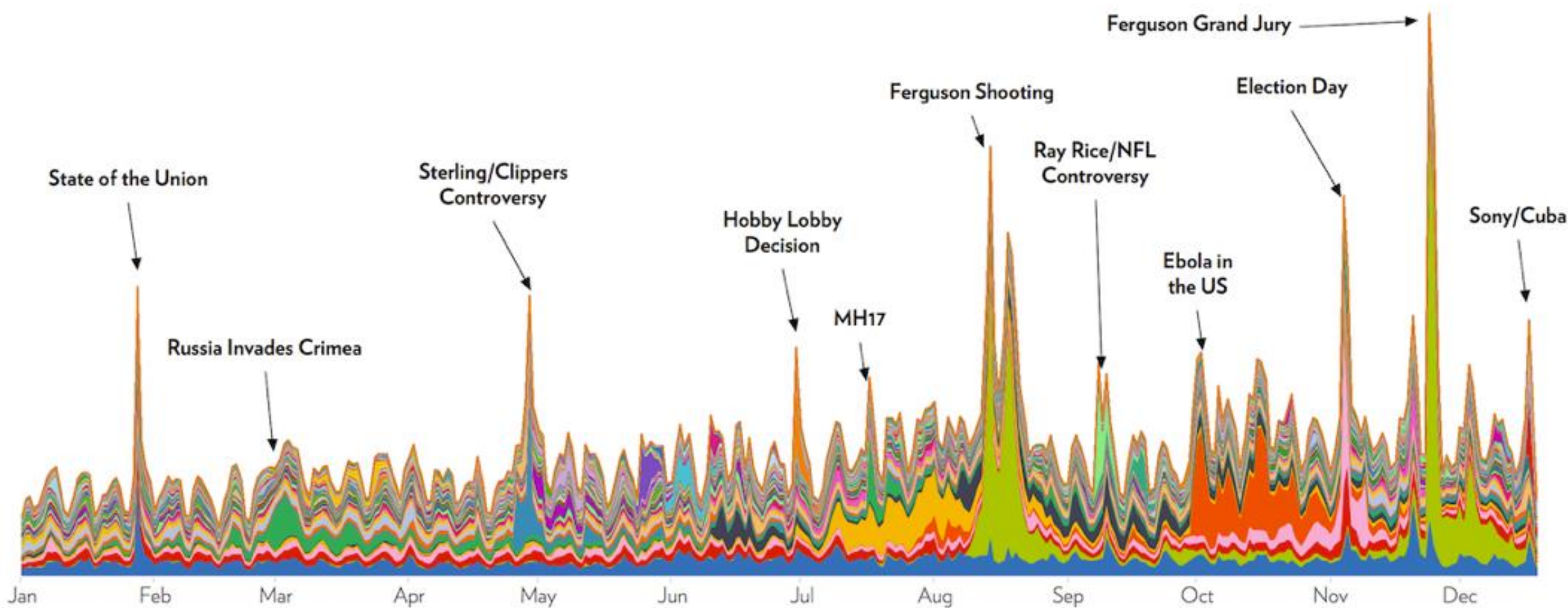




# THE YEAR IN NEWS

from ECHELON INSIGHTS

What America talked about in 2014, as viewed through 184.5 million Twitter mentions.

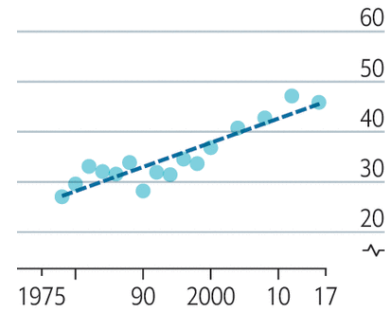


## Us and them

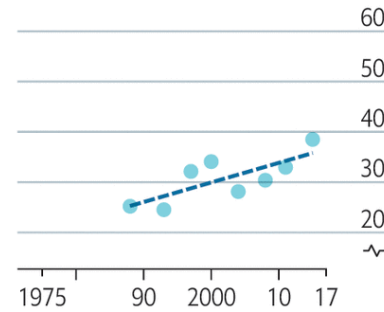
### Polarisation between political parties

Measured by gap in sentiment\* towards voters' own party and towards other parties

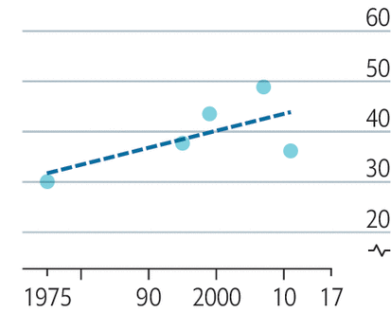
#### United States



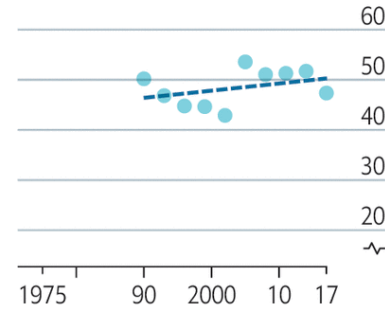
#### Canada



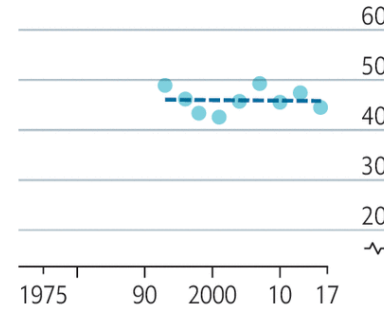
#### Switzerland



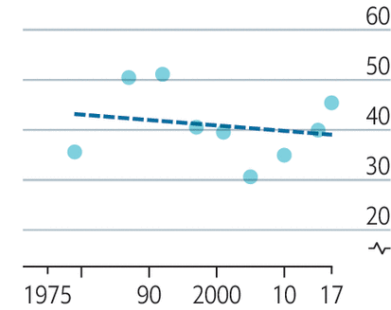
#### New Zealand



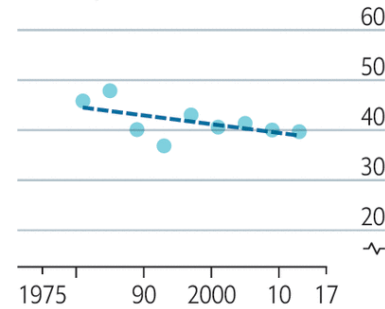
#### Australia



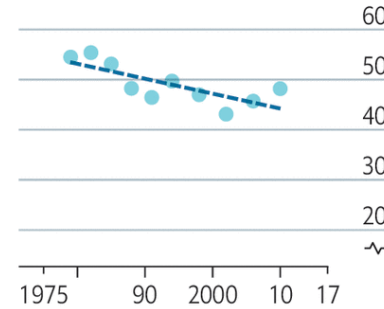
#### Britain



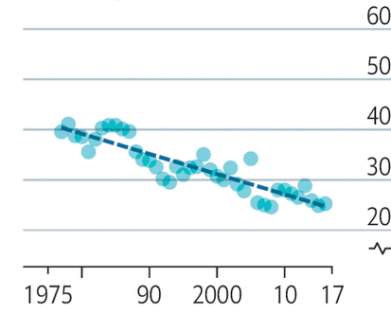
#### Norway



#### Sweden

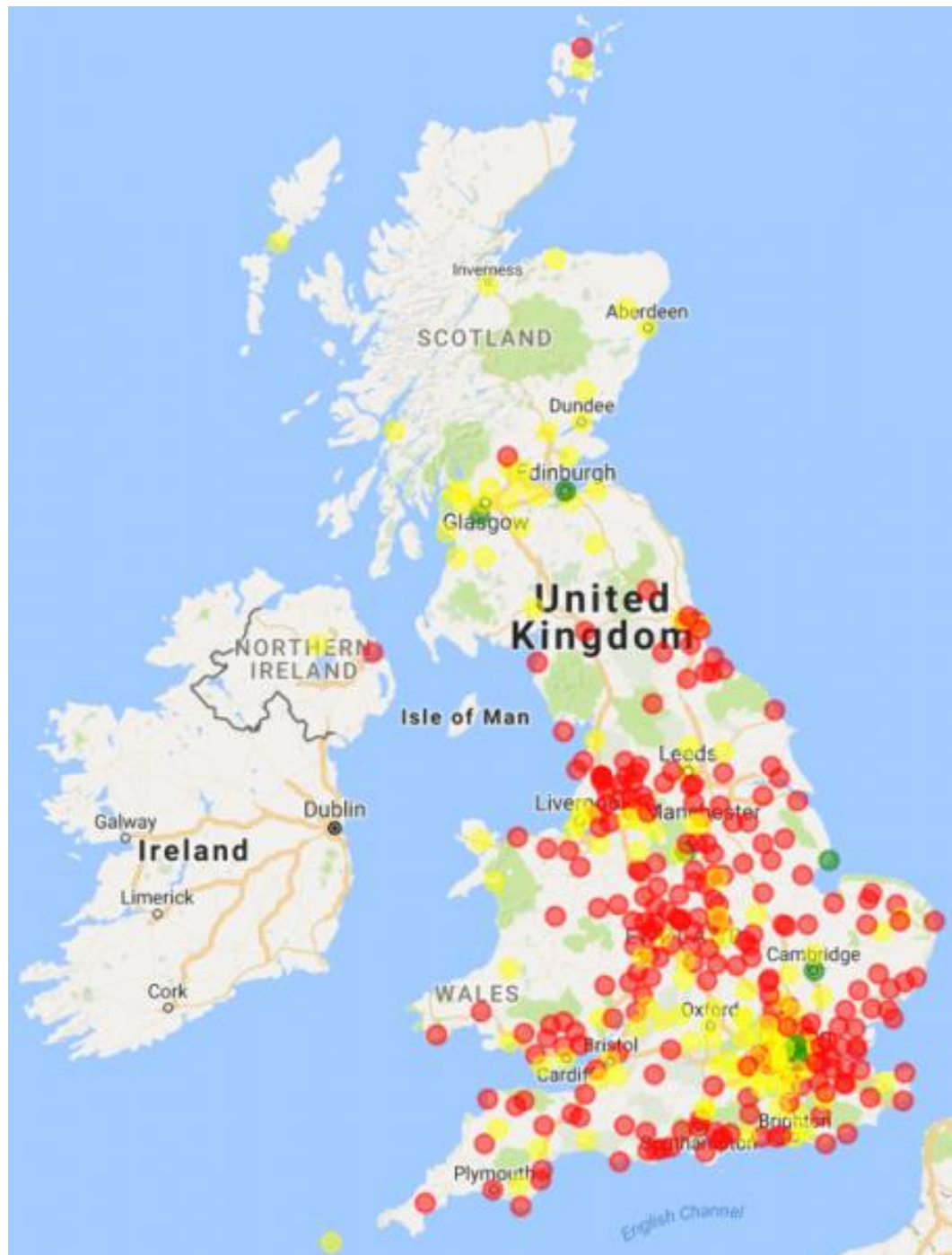


#### Germany†



Source: "Cross-country trends in affective polarization",  
by L. Boxell, M. Gentzkow and J. M. Shapiro, 2020

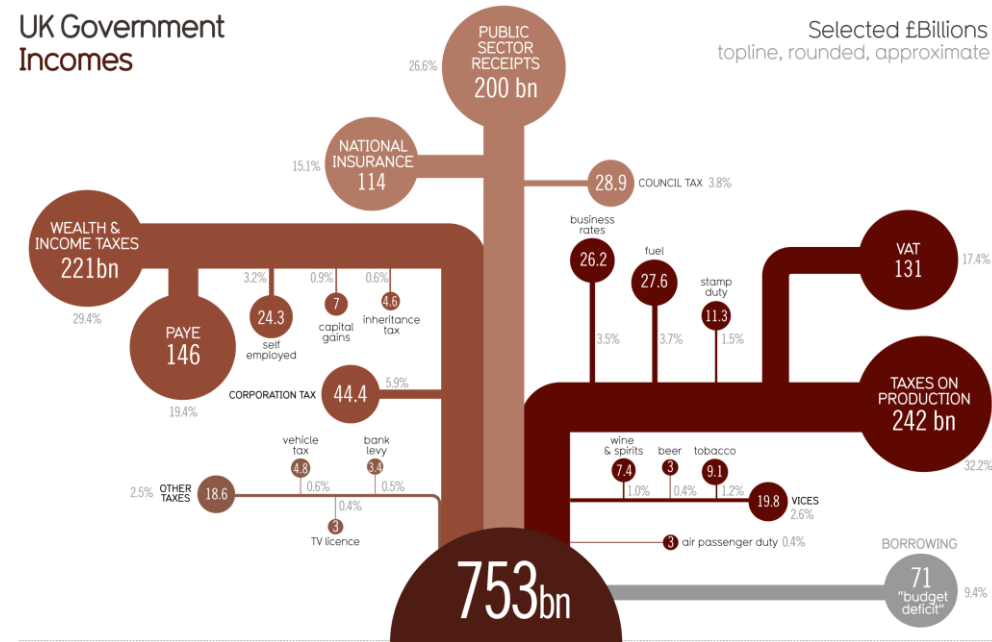
\*Voters were asked to rate their feelings (0=least likeable,  
100=most likeable) to each party in their country  
†West Germany before 1990, excluding former East Germany after 1990



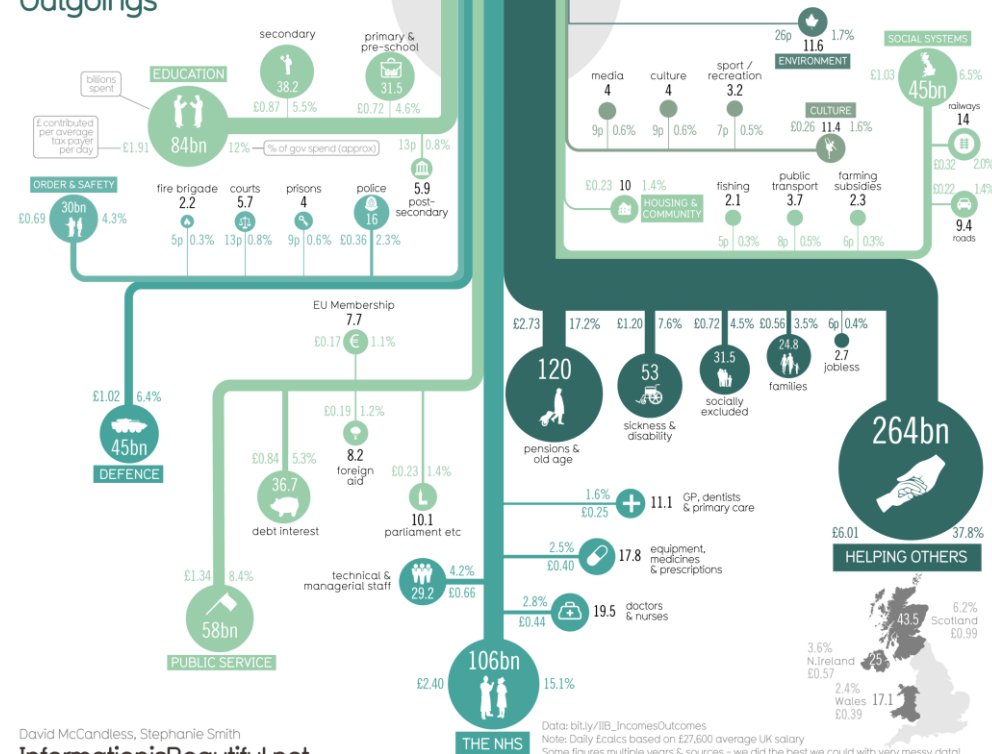
# Brexit referendum

# UK Government Incomes

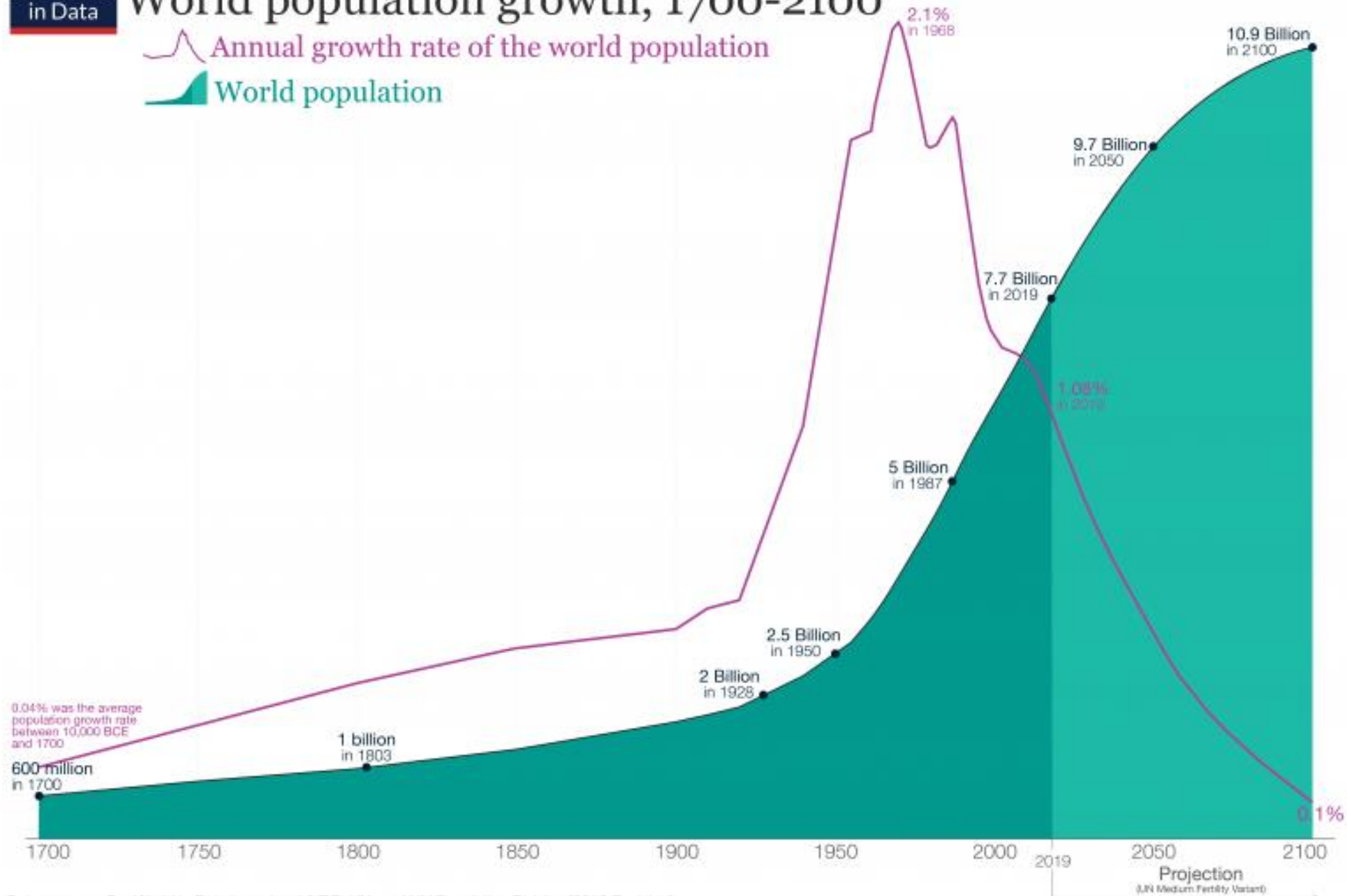
Selected £Billions  
topline, rounded, approximate



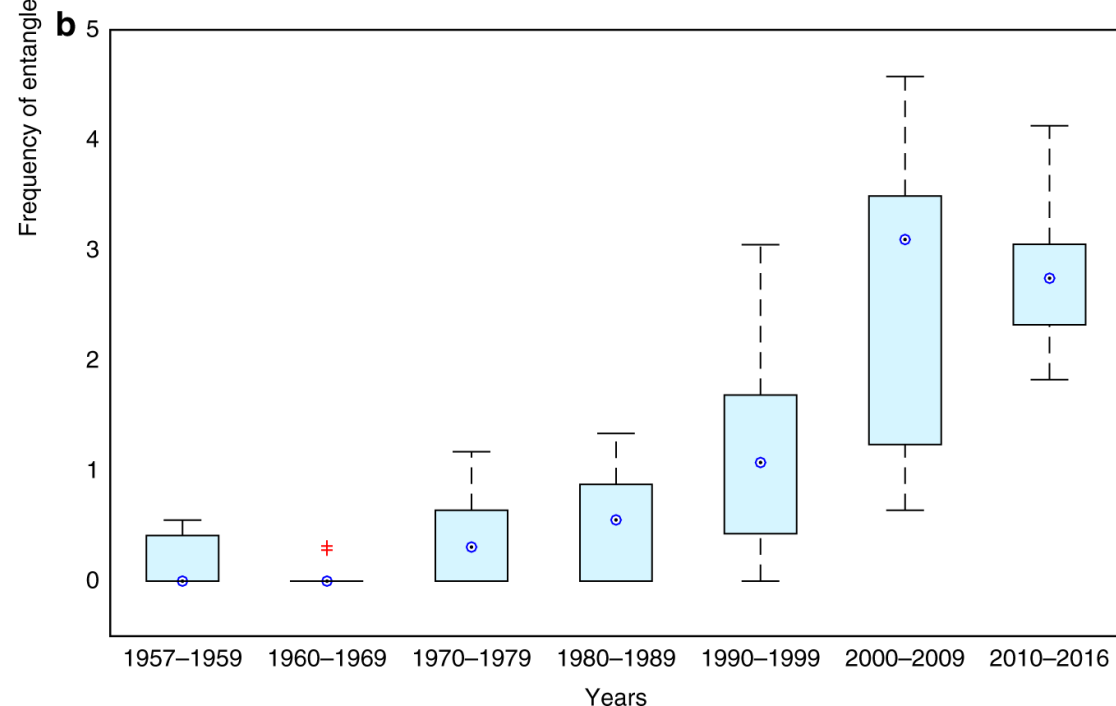
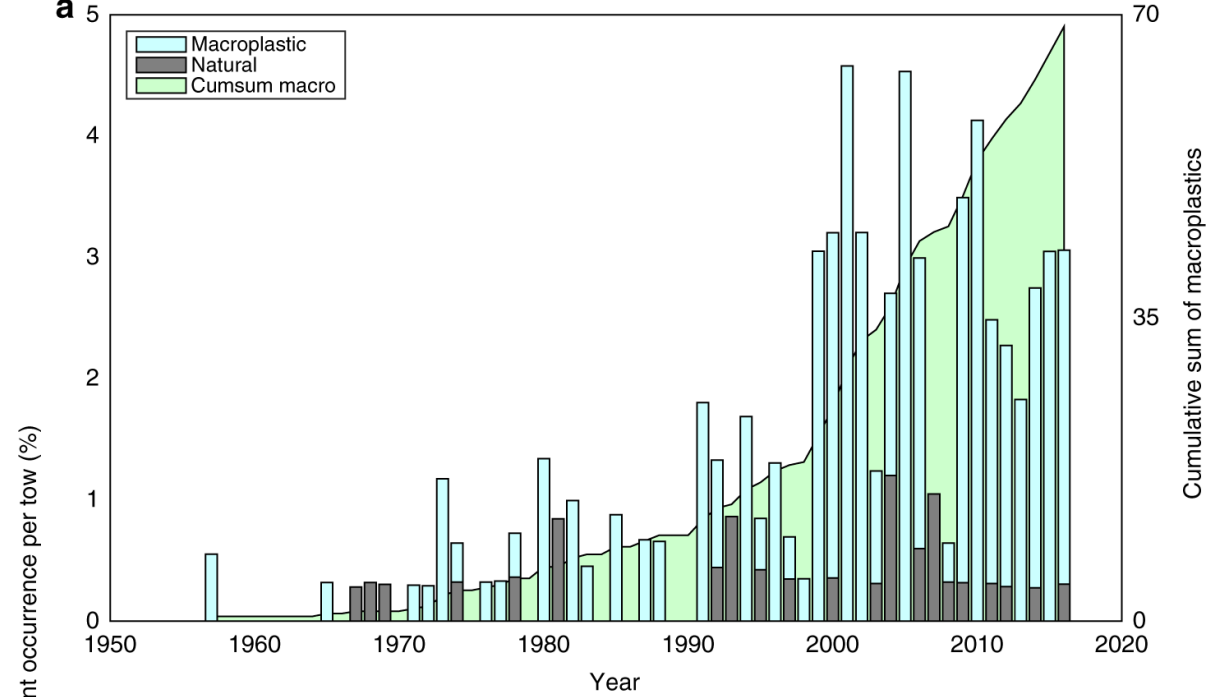
# Outgoings



## World population growth, 1700-2100

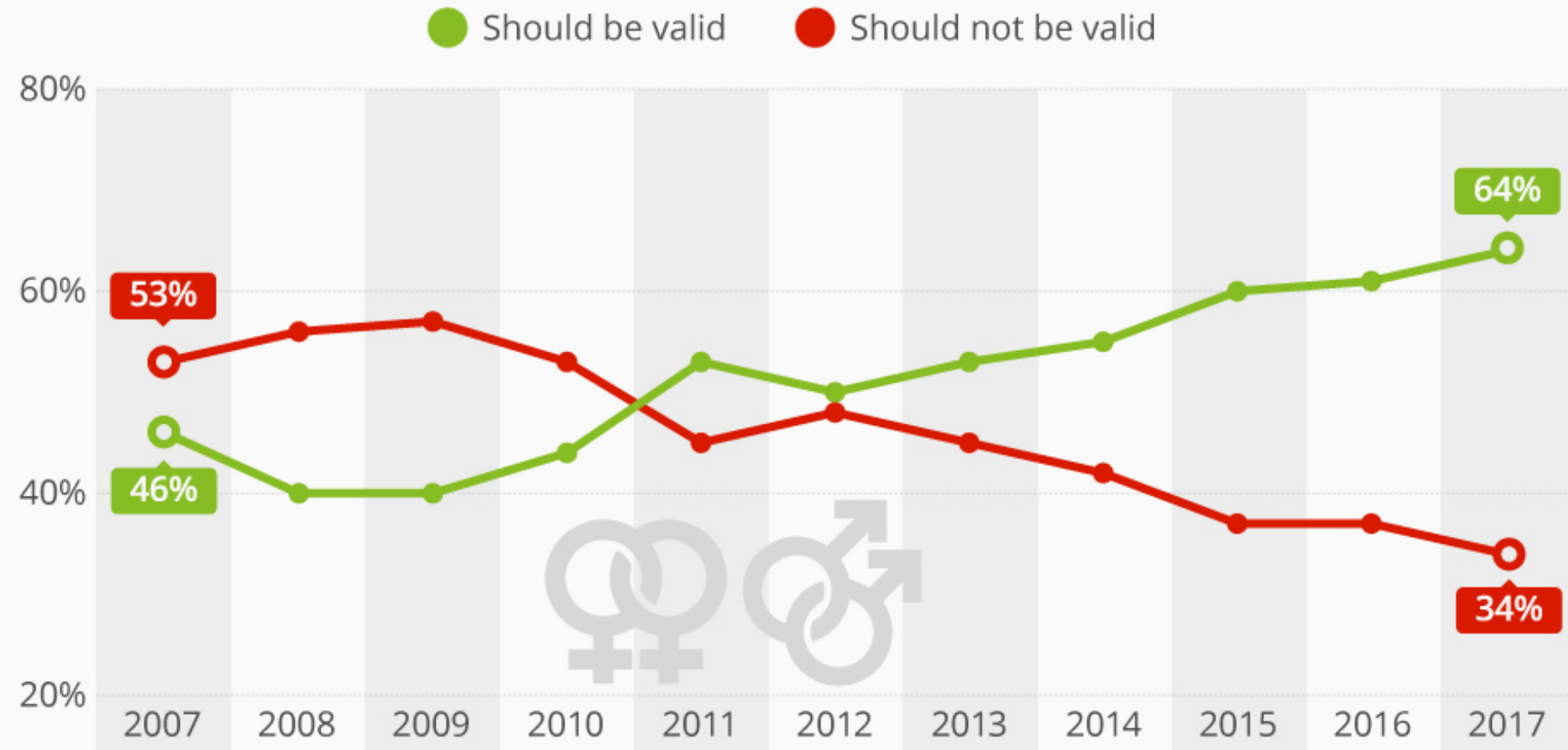






# U.S. Support for Gay Marriage Reaches New High

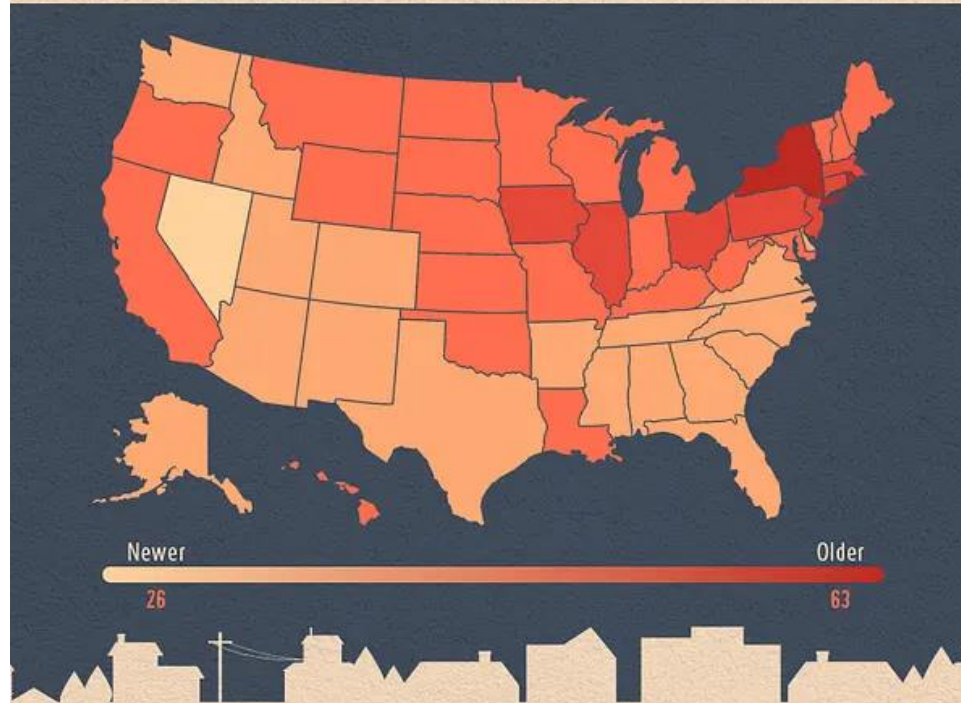
% U.S. adults that think same-sex marriages should or should not be recognized as valid by law



Original question: "Do you think marriages between same-sex couples should or should not be recognized by the law as valid, with the same rights as traditional marriages?"

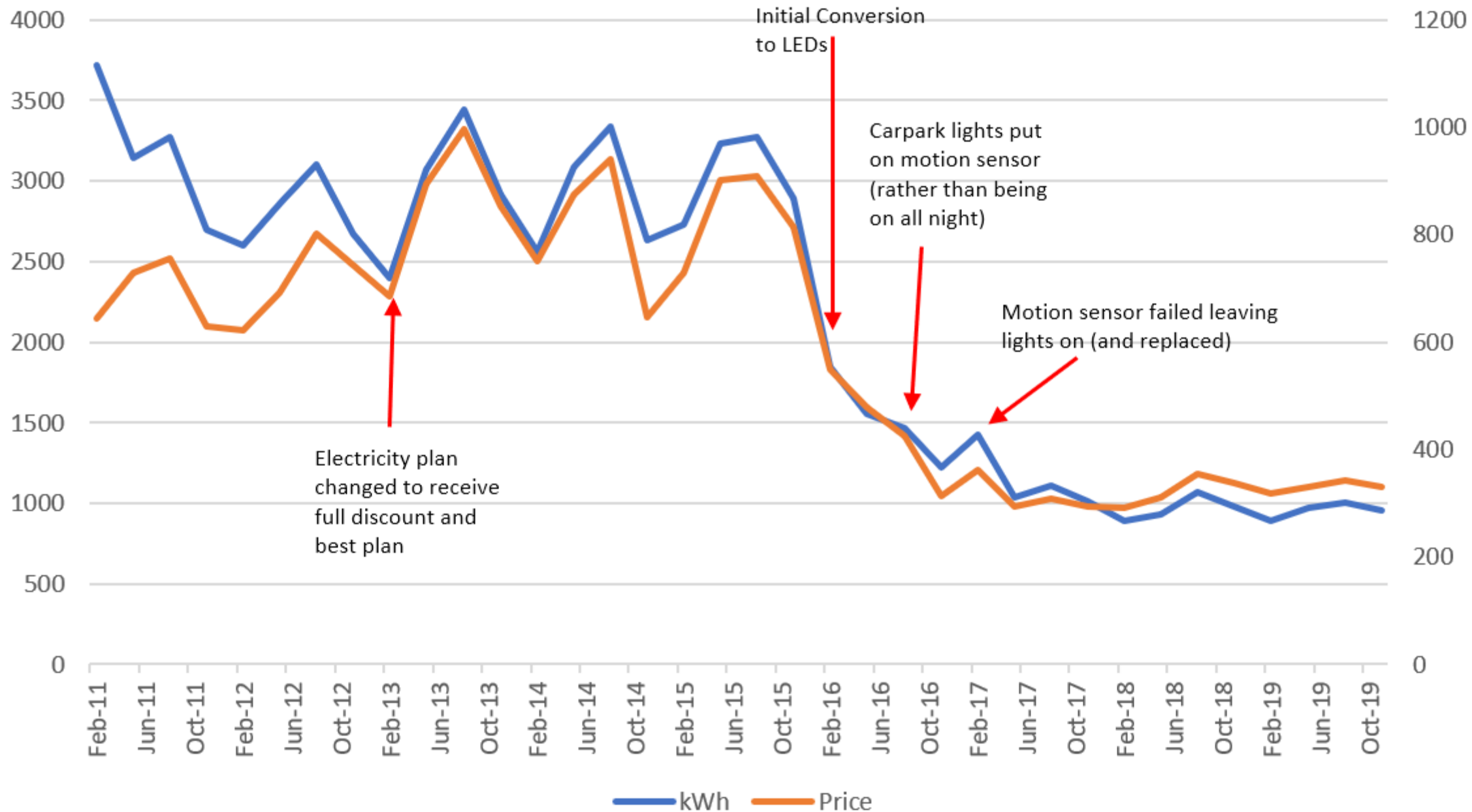


# MEDIAN HOME AGE BY STATE

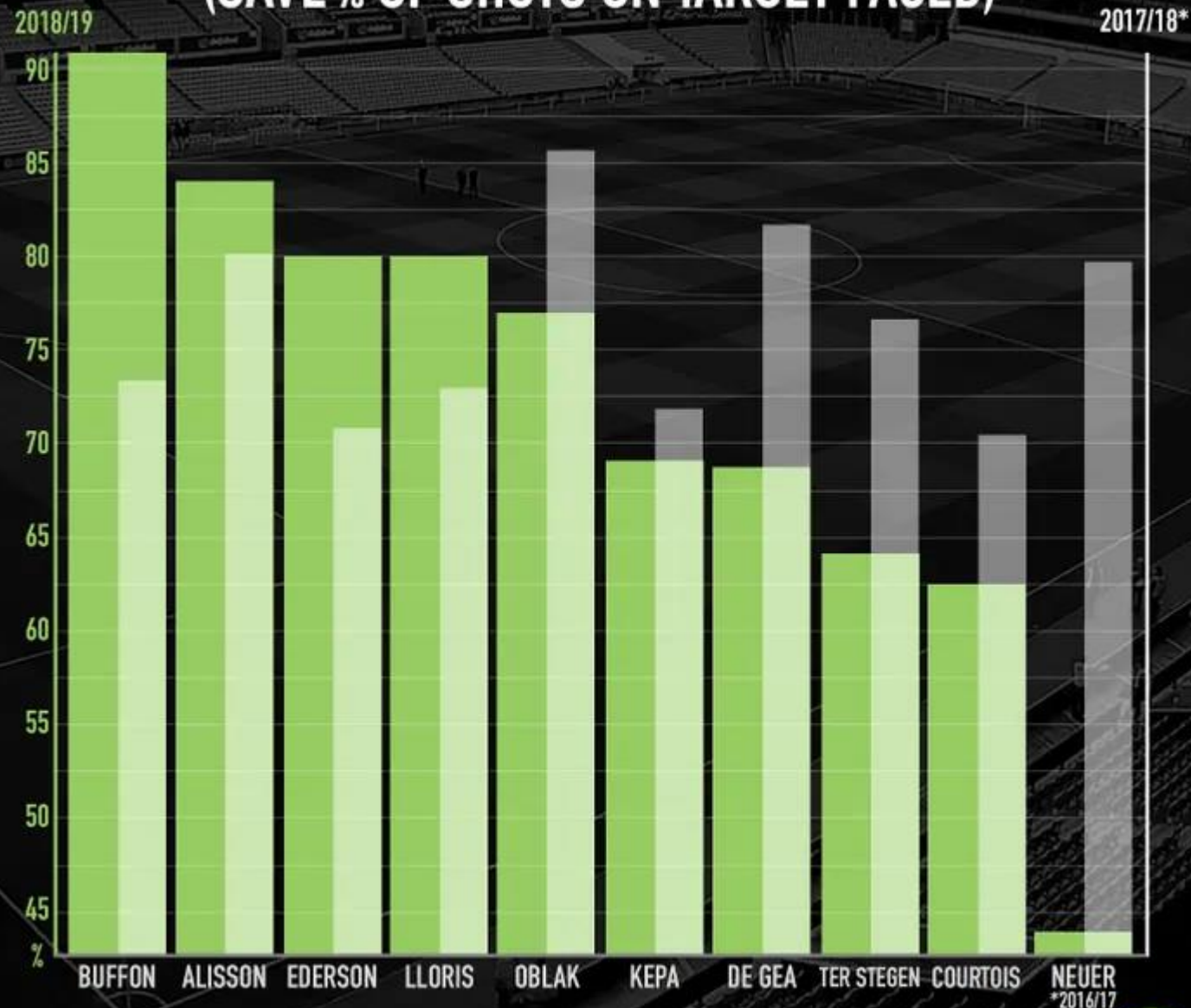


STATE	YEARS OLD	STATE	YEARS OLD	STATE	YEARS OLD	STATE	YEARS OLD
Alabama	36	Indiana	46	Nebraska	47	South Carolina	32
Alaska	36	Iowa	50	Nevada	26	South Dakota	43
Arizona	30	Kansas	46	New Hampshire	43	Tennessee	36
Arkansas	36	Kentucky	40	New Jersey	53	Texas	33
California	45	Louisiana	41	New Mexico	38	Utah	31
Colorado	36	Maine	45	New York	63	Vermont	46
Connecticut	55	Maryland	43	North Carolina	32	Virginia	38
Delaware	37	Massachusetts	59	North Dakota	40	Washington	37
Florida	34	Michigan	48	Ohio	52	West Virginia	45
Georgia	31	Minnesota	43	Oklahoma	42	Wisconsin	47
Hawaii	41	Mississippi	36	Oregon	41	Wyoming	40
Idaho	34	Missouri	44	Pennsylvania	57		
Illinois	51	Montana	42	Rhode Island	60		

# Electricity



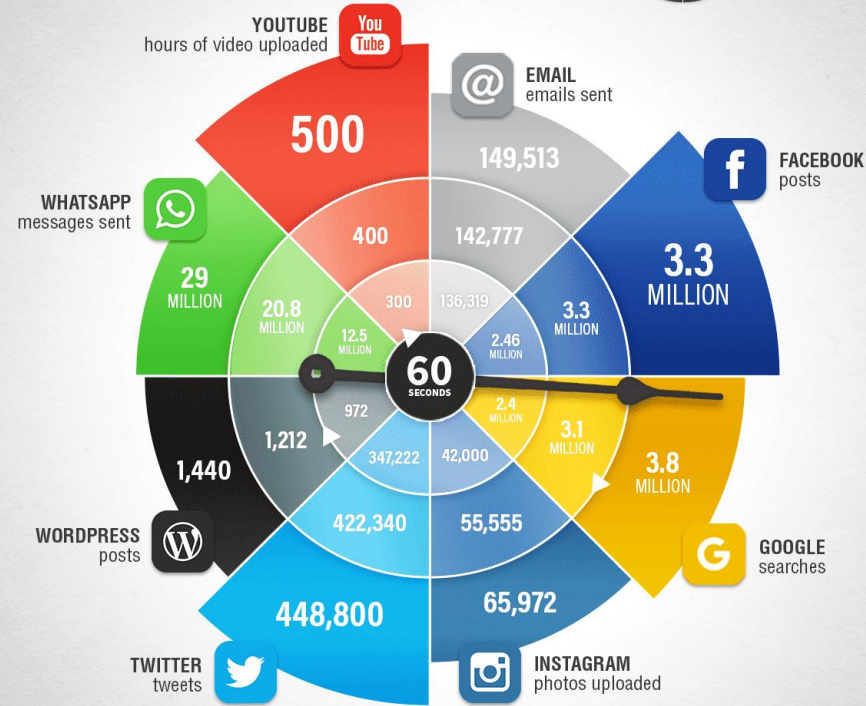
# SAVE SUCCESS RATE (SAVE % OF SHOTS ON TARGET FACED)





# What Happens Online in 60 Seconds?

Managing Content Shock in 2017



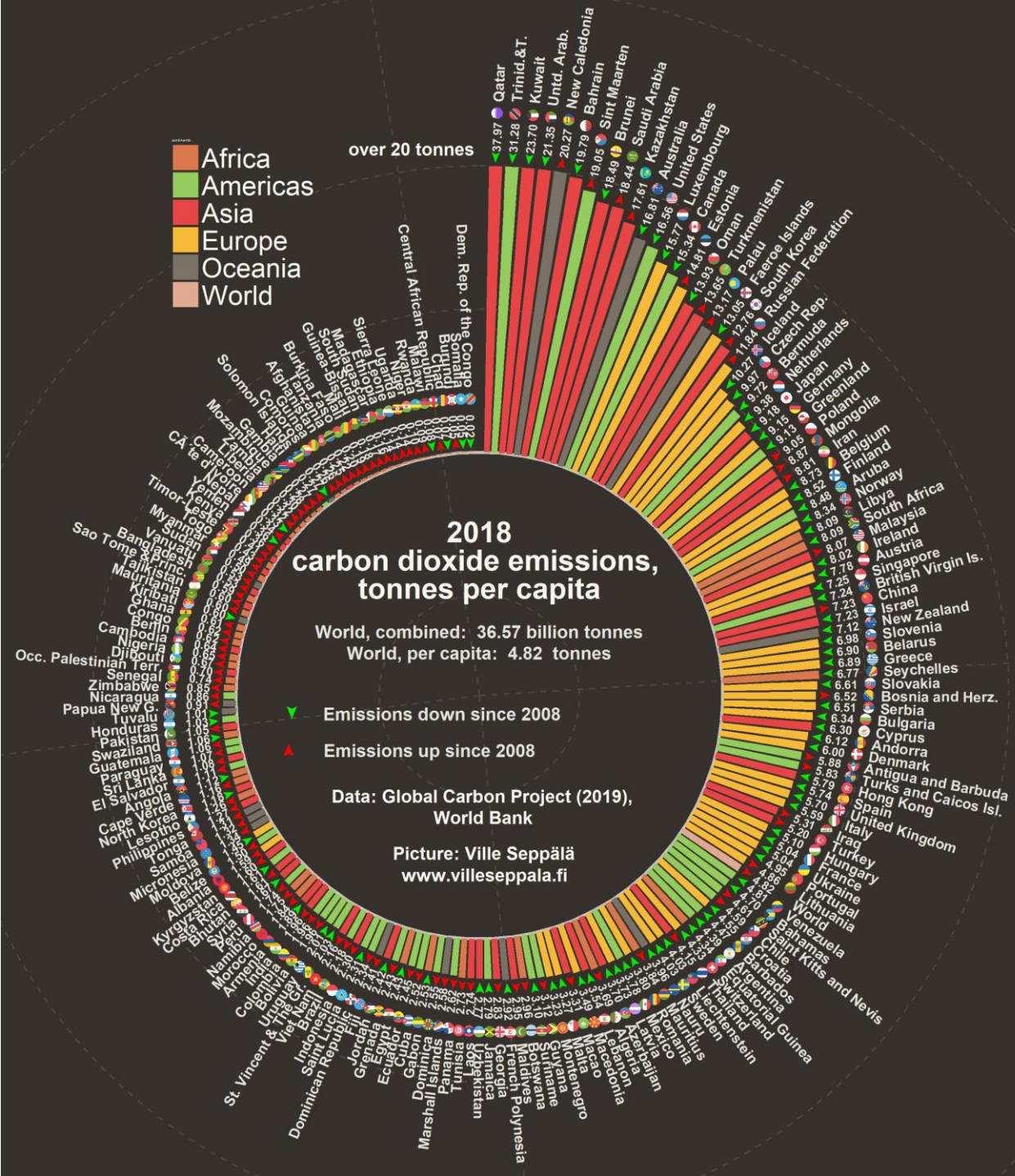
The world has fallen in love with social media and now automatically turns to online platforms to research and buy products and services. This gives fantastic opportunities for marketers to engage audiences and encourage content sharing, but also gives huge challenges of getting cut-through and keeping up-to-date ourselves!

At Smart Insights, we look to help by focusing on the 'Must-know' platform developments and developing mind tools to help businesses review how they can best Plan, Manage and Optimize their digital marketing – see our <http://bit.ly/smartlibrary>

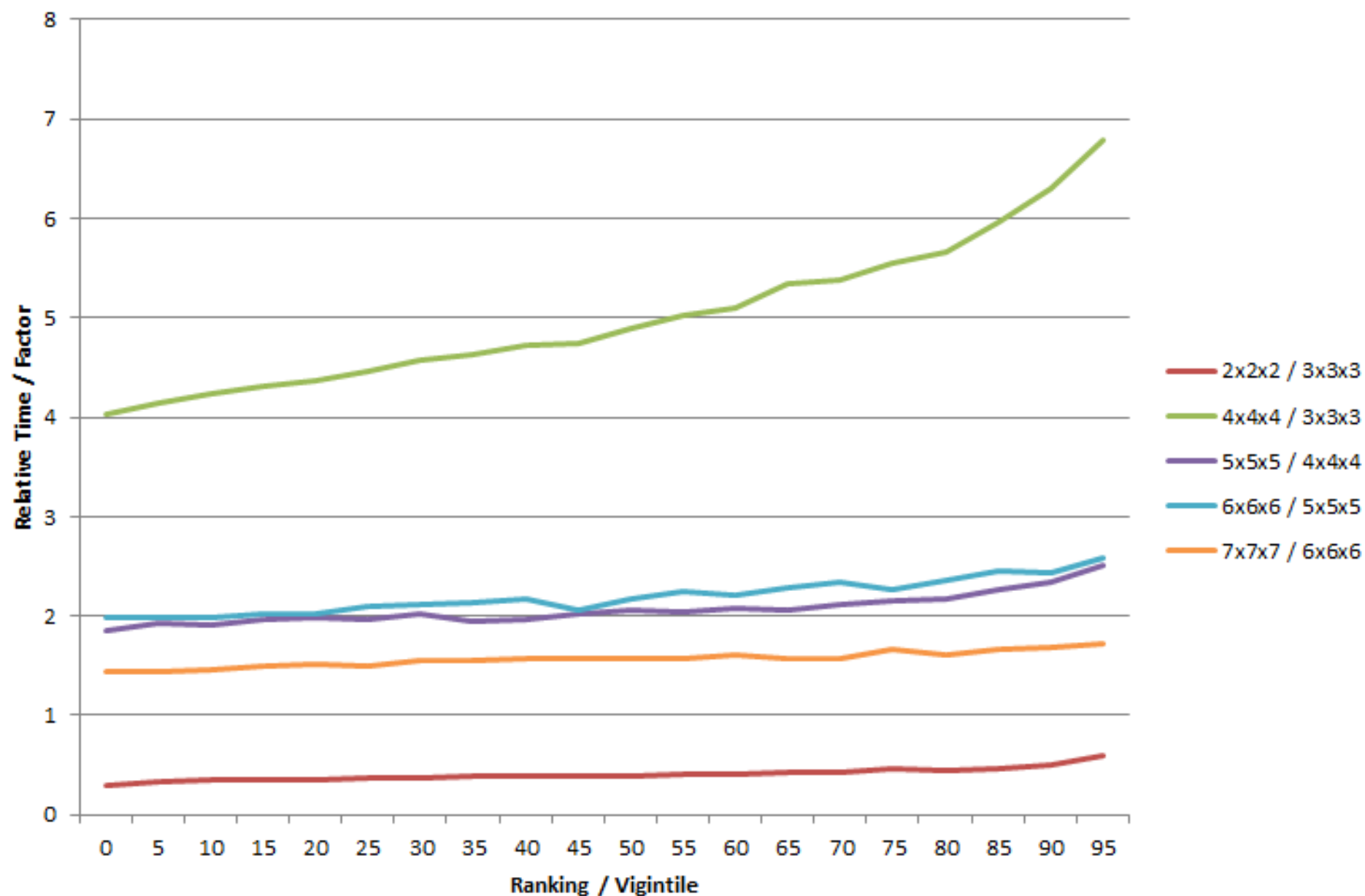
Brought to you by:

 **Smart  
Insights**  
[www.smartinsights.com](http://www.smartinsights.com)

Sources: Email: 2014-2016: Radicati; Facebook: 2015 Qmee; 2016 Wishpond; Google: 2014 Statista; 2015 AdWeek; 2016 Internet Live Stats; Instagram: 2014 Tech Crunch; 2015 Nuke Suite; 2016 Instagram; Twitter: 2014 Internet Live Stats; 2015 Internet Live Stats; 2016 Tech Insider; WordPress: 2014 WordPress; 2015 WordPress; 2016 Internet Live Stats; WhatsApp: 2014 Fierce Mobile IT; 2015 Slash Gear; 2016 Expanded Ramblings; YouTube: 2014 Youtube Global Blog; 2015 Reel SEO.



# Relative Solve Times for 2x2x2 - 7x7x7 (Calculated using Official Averages)





# **JOE BURROW** DRAFT STOCK

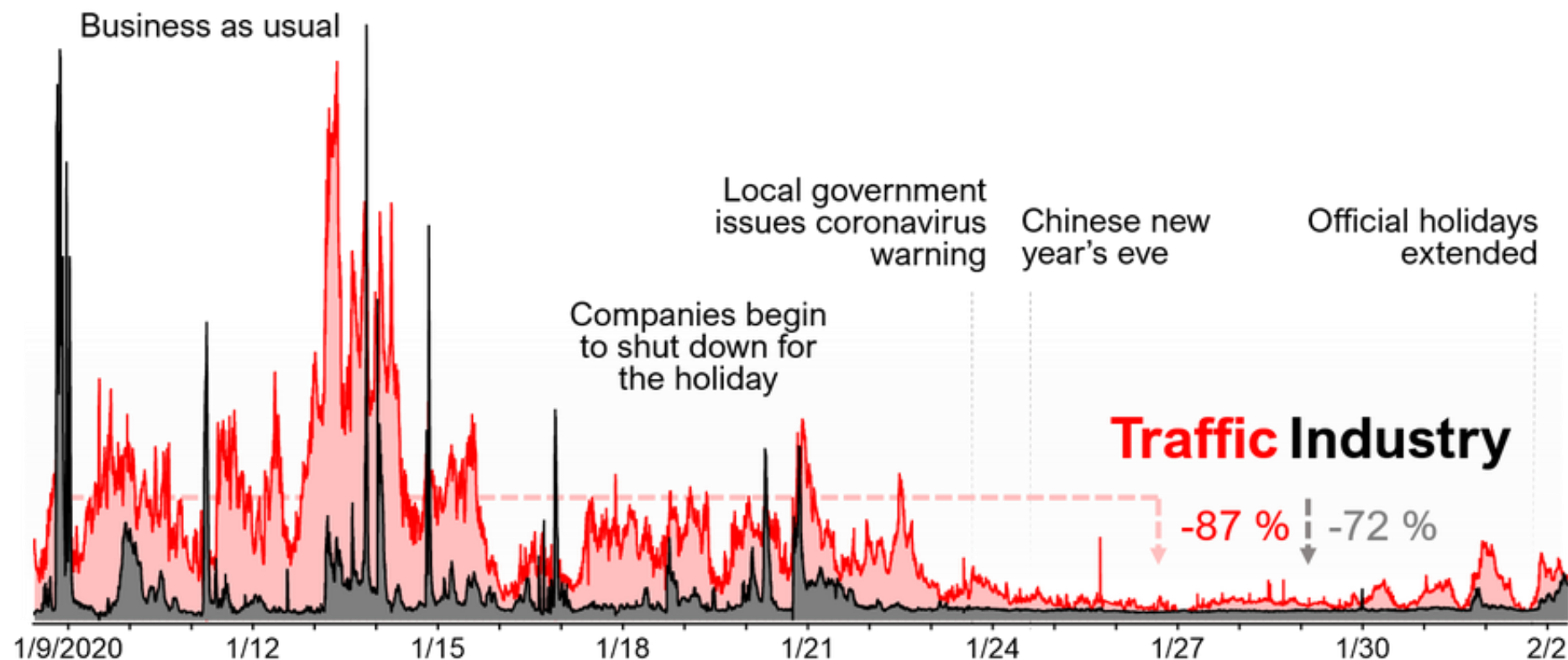
ACCORDING TO TODD McSHAY





# THE Air Quality Baseline in China

Chinese New Year and Coronavirus overlap to produce uniquely low emissions



Relative concentrations of volatile organic compounds (VOCs) from **traffic** and **industry** measured by Vocus Elf PTR-TOF in a Chinese megacity

● Meat ● Fish ● Fruit & veg ● Grains ● Nuts, seeds & beans ● Dairy ● Fats & high fat starch ● Sugars & desserts ● Drinks ● Alcoholic drinks ● Other / misc

